

FPS10X-M/FPS10DL

Noblelift Electric Walkie Stacker for Light-duty Applications

INTRODUCTION

The FPSE 10X-M based on the same reliable components and design-character as the electric stacker ECL series with monomast for perfect view to the loads. It is the cost-effective solution for all light-duty stacking applications.

ADVANTAGES:

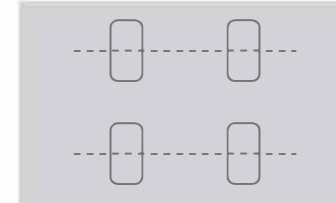
- Powerful and reliable Italian Drive Unit.
- Ergonomic tiller.
- Stability through additional stabilizers.
- Maintenance free battery.
- Built-in charger.

FPS10X-M



Economic robust handle

Robust but economic handle with steel housing and plastic coating ensures reliable and comfortable operation.



Stability

4-Wheel design with side stabilizer for excellent view and maneuverability as well as high stability.



Powerful battery

2x12V 85Ah powerful VRAL-AGM maintenance free batteries (option 2x12V 106Ah).

Fulfilling standards

Fulfilling the actual valid European standards, also in ISO 13849 performance level.

Italian drive technology

Italian drive system for more power, better energy consumption as well as low noise and maintenance costs.

Easy to maneuver

Smart mono mast for good view to the forks from both sides.

Applications

Ideal economic solution for all indoor low duty and occasional stacking operations.



Robust profile

Robust mast with real mast profiles for perfect stability, accuracy and high lifetime.

FPS10DL



Built-in charger

The built-in charger gives higher autonomy during the application.

Reliable instruments

Battery discharge indicator with automatic lift cut-off function for higher battery lifetime.

Battery deep discharge protection

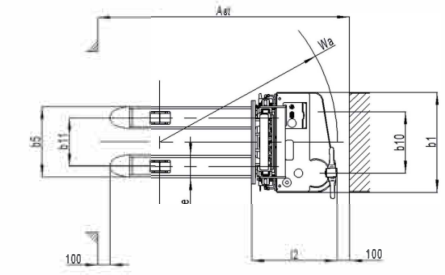
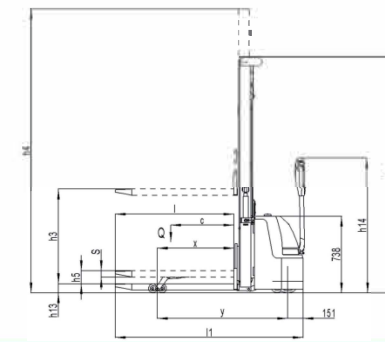
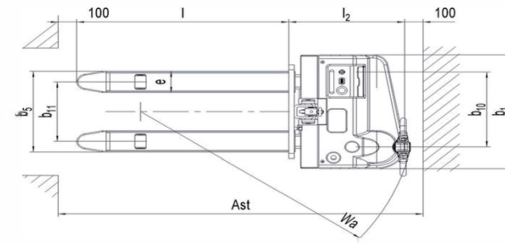
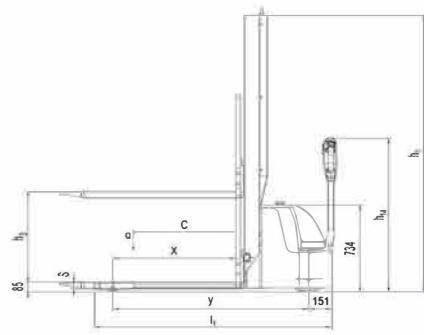
Smart Mono mast

Numerous trays for storage such as drinks, cell phone, pen and others.



FPS10X-M

Electric Stacker



Type sheet for industrial truck acc. to VDI 2198 1KG=2.2LB 1INCH=25.4MM

Distinguishing mark	1.2	Manufacturer's type designation		FPS10X-M			
	1.3	Power (battery ,diesel, petrol, gas, manual)		Battery			
	1.4	Operator type		Pedestrian			
	1.5	Load Capacity / rated load	Q (t)	1.0			
	1.6	Load centre distance	c (mm)	600			
	1.8	Load distance ,centre of drive axle to fork	x (mm)	800			
	1.9	Wheelbase	y (mm)	1281			
	Weight	2.1	Service weight	kg	454	442	432
		2.2	Axle loading, laden front/rear	kg	487/967	481/961	476/956
2.3		Axle loading, unladen front/rear	kg	335/119	329/113	324/108	
Tires, chassis	3.1	Tires		Polyurethane			
	3.2	Tire size,front	Φxw (mm)	Φ210×70			
	3.3	Tire size,rear	Φxw (mm)	Φ80×93			
	3.4	Additional wheels(dimensions)	Φxw (mm)	Φ124×60			
	3.5	Wheels,number front/rear(x=driven wheels)		1x +1/2			
	3.6	Tread, front	b ₁₀ (mm)	529			
	3.7	Tread, rear	b ₁₁ (mm)	390			
Dimensions	4.2	Lowered mast height	h ₁ (mm)	2349	1949	1570	
	4.4	Lift height	h ₃ (mm)	1915	1515	715	
	4.9	Height of tiller in drive position min./ max.	h ₁₄ (mm)	785/1300			
	4.15	Height, lowered	h ₁₃ (mm)	85			
	4.19	Overall length	l ₁ (mm)	1778			
	4.20	Length to face of forks	l ₂ (mm)	628			
	4.21	Overall width	b ₁ (mm)	800			
	4.22	Fork dimensions	s/e/l (mm)	60 / 150 / 1150			
	4.25	Distance between fork-arms	b ₅ (mm)	540			
	4.32	Ground clearance, centre of wheelbase	m ₂ (mm)	35			
	4.33	Aisle width for pallets 1000X1200 crossways	Ast (mm)	2316			
4.34	Aisle width for pallets 800X1200 lengthways	Ast (mm)	2248				
4.35	Turning radius	Wa (mm)	1485				
Performance data	5.1	Travel speed, laden/ unladen	km/h	4.3/4.5			
	5.2	Lift speed, laden/ unladen	m/s	0.11/0.16			
	5.3	Lowering speed, laden/ unladen	m/s	0.13/0.11			
	5.8	Max. gradeability, laden/ unladen	%	5/10			
	5.10	Service brake		Electromagnetic			
Electric- engine	6.1	Drive motor rating S2 60min	kW	0.45			
	6.2	Lift motor rating at S3 4.5%	kW	2.2			
	6.3	Battery acc. to DIN 43531/35/36 A, B, C, no		No			
	6.4	Battery voltage, nominal capacity K5	V / Ah	2x12/85 ¹⁾			
	6.5	Battery weight +/-5%	kg	2x55			
	6.6	Energy consumption acc: to VDI cycle	kWh/h	0.73			
Additional data	8.1	Type of drive control		DC			
	8.4	Sound level at driver's ear acc. to EN 12053	dB(A)	<70			

1) Option:2X12V/106Ah

Type sheet for industrial truck acc. to VDI 2198 1KG=2.2LB 1INCH=25.4MM

Distinguishing mark	1.2	Manufacturer's type designation		1600	FPS10DL	2900	
	1.3	Power (battery ,diesel, petrol, gas, manual)		Battery			
	1.4	Operator type		Pedestrian			
	1.5	Load Capacity / rated load		1.2			
	1.6	Load centre distance	c (mm)	600			
	1.8	Load distance ,centre of drive axle to fork	x (mm)	742 ²⁾			
	1.9	Wheelbase	y (mm)	1263 ²⁾			
	Weight	2.1	Service weight	kg	612	642	
		2.2	Axle loading, laden front/rear	kg	697/1115	707/1135	
2.3		Axle loading, unladen front/rear	kg	448/164	458/184		
Tires, chassis	3.1	Tires		Polyurethane			
	3.2	Tire size,front	Φxw (mm)	Φ220×70			
	3.3	Tire size,rear	Φxw (mm)	Φ80×70			
	3.4	Additional wheels(dimensions)	Φxw (mm)	Φ124×60			
	3.5	Wheels,number front/rear(x=driven wheels)		1x+1/4			
	3.6	Tread, front	b ₁₀ (mm)	529			
	3.7	Tread, rear	b ₁₁ (mm)	390			
Dimensions	4.2	Lowered mast height	h ₁ (mm)	1983		1983	
	4.3	Free Lift height	h ₂ (mm)		70		
	4.4	Lift height	h ₃ (mm)	1530		2840	
	4.5	Extended maximal height	h ₄ (mm)	1983		3368	
	4.6	Initial lift	h ₅ (mm)		120		
	4.9	Height of tiller in drive position min./ max.	h ₁₄ (mm)	785/1300			
	4.15	Height, lowered	h ₁₃ (mm)	90			
	4.19	Overall length	l ₁ (mm)	1821			
	4.20	Length to face of forks	l ₂ (mm)	671			
	4.21	Overall width	b ₁ (mm)	800			
	4.22	Fork dimensions	s/e/l (mm)	60 / 180 / 1150			
	4.25	Distance between fork-arms	b ₅ (mm)	570			
	4.32	Ground clearance, centre of wheelbase	m ₂ (mm)	16/136			
4.33	Aisle width for pallets 1000X1200 crossways	Ast (mm)	2341				
4.34	Aisle width for pallets 800X1200 lengthways	Ast (mm)	2267				
4.35	Turning radius	Wa (mm)	1437 ²⁾				
Performance data	5.1	Travel speed, laden/ unladen	km/h	3.9/4.1			
	5.2	Lift speed, laden/ unladen	m/s	0.11/0.16			
	5.3	Lowering speed, laden/ unladen	m/s	0.13/0.11			
	5.8	Max. gradeability, laden/ unladen	%	4/10			
	5.10	Service brake		Electromagnetic			
Electric- engine	6.1	Drive motor rating S2 60min	kW	0.45			
	6.2	Lift motor rating at S3 4.5%	kW	2.2			
	6.3	Battery acc. to DIN 43531/35/36 A, B, C, no		No			
	6.4	Battery voltage, nominal capacity K5	V / Ah	2x12/85 ¹⁾			
	6.5	Battery weight +/-5%	kg	2x25			
	6.6	Energy consumption acc: to VDI cycle	kWh/h	0.73			
Additional data	8.1	Type of drive control		DC			
	8.4	Sound level at driver's ear acc. to EN 12053	dB(A)	<70			

1) Option:2X12V/106Ah

2) load roller lowered:+78mm